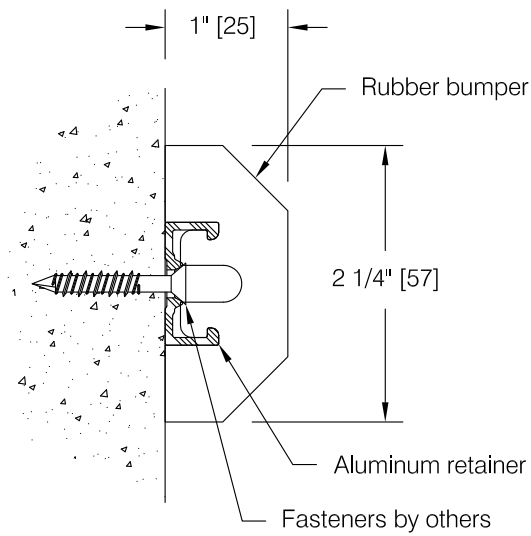
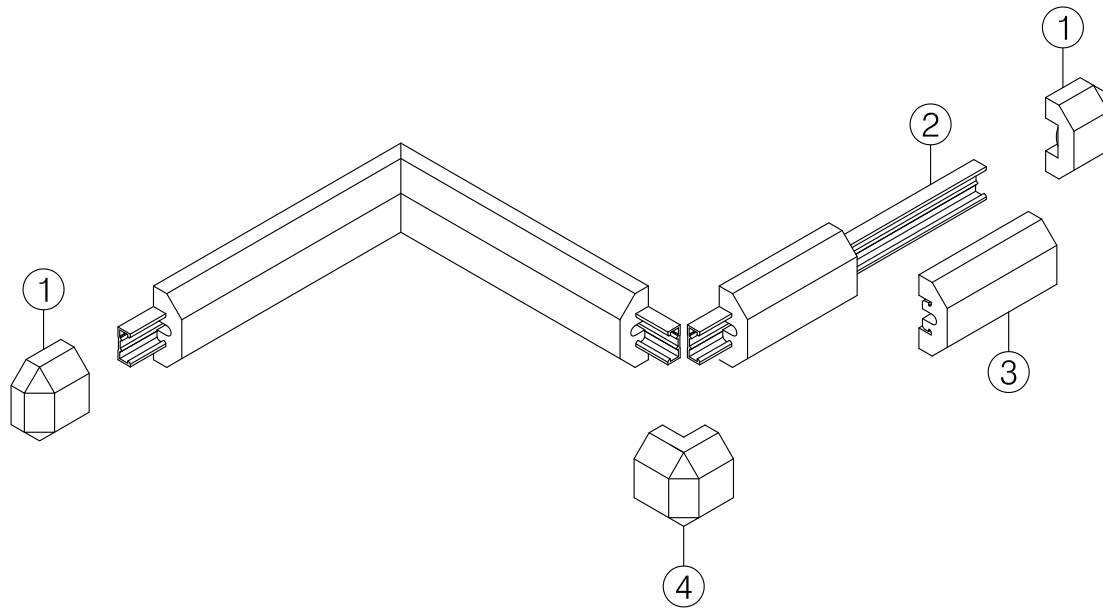


Protector Series 2220



This installation instruction is applicable to:

2220



Component Part Numbers:

- 1) End cap
- 2) Aluminum retainer
- 3) Rubber bumper
- 4) Outside corner

Step 1: Determine height to top of bumper guard and snap a chalk line 5/8" below to locate top of aluminum retainer mounting height, see **fig 1**.

Important: Store material in a clean dry place where the temperature is maintained above 50°F (10°C). Walls and rooms should be maintained at a minimum of 65°F (18°C) for at least 48 hours prior to installation. Acclimate materials to normal building conditions for at least 24 hours before cutting and installing.

Step 2: Cut aluminum retainer. See **Cutting Adjustment Diagrams and Schedule** for adjustments to aluminum retainer length at end caps, inside corners, and outside corners. Refer to **Minimum Layout Configurations** for additional information.

Important: All cuts must be square and deburred

Step 4: Layout aluminum retainer "face up", mark and drill holes for mounting hardware.

Mounting holes must be spaced:

- Not to exceed 16" on center
- 1 3/4" to 3" from end of aluminum retainer where molded end caps and outside corners will be installed, see **fig 3**.
- 1" to 3" from end of aluminum retainer at butt-joints and ends with no molded accessories, see **fig 3**.
- To align with metal studs or horizontal metal backer (by others). Adjust mounting hole locations to align with studs as necessary. Maintain nominal 16" fastener spacing by supplementing with drywall anchors as needed.

Note: Locate mounting holes along centerline of retainer to ensure fasteners are centered in the relief area provided, see **fig 2**.

Step 5: Locate and drill hardware mounting holes in wall construction using the aluminum retainer as a template, or by careful measurement. Choice of hardware will dictate hole diameter.

Note: Mounting holes in wall may not be needed when using self-drilling hardware with metal studs or metal backing.

Step 7: Mount aluminum retainer to wall with the appropriate hardware according to wall construction. install aluminum with ends aligned 3/16" from outside corners and 1/2" from inside corners as shown in the **Cutting Adjustment Diagrams and Schedule**. These dimensions provide recommended component clearance.

Suggested hardware:

- Drywall with metal backing : #6 or #8 drill-point drywall screw or #8 flat head sheet metal screw.
- Drywall without stud or backing : Plastic Alligator® insert with #6 or #8 bugle head drywall screw or #8 flathead sheet metal screw.
- Masonry : Plastic Alligator® insert with #6 or #8 bugle head drywall screw or #8 flathead sheet metal screw, or 3/16" flat head Tapcon®.

Important: Fastener head must clear underside of bumper when installed on retainer. If necessary, countersink holes to provide a

Step 7: Install molded end caps and outside corners by pressing them firmly in place on aluminum retainer, see **fig 4**. A solution of dish soap and water lightly applied to the grooved openings in the back or the molded accessories may facilitate installation.

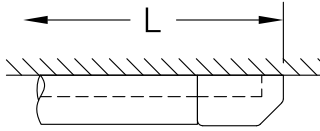
Step 8: Measure between molded accessories and inside corners and cut rubber bumper accordingly. The rubber bumper may be cut using a portable bandsaw.

Caution: Do not use a miter saw/cut-off saw to cut rubber bumper. Circular blades may "grab" the material and pull it into the blade.

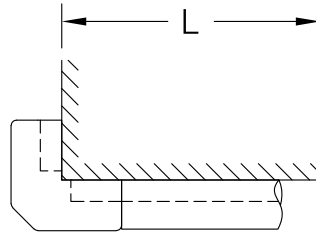
Step 9: Install bumper by pressing it firmly in place over the aluminum retainer. A solution of dish soap and water applied lightly to the groove in the back of the bumper may facilitate installation.

Protector Series 2220

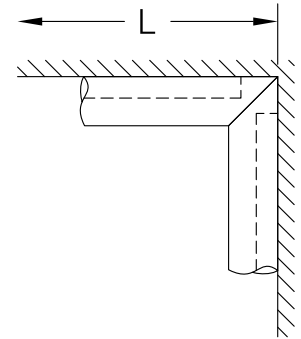
Cutting Adjustment Diagrams and Schedule



End Cap



Outside Corner

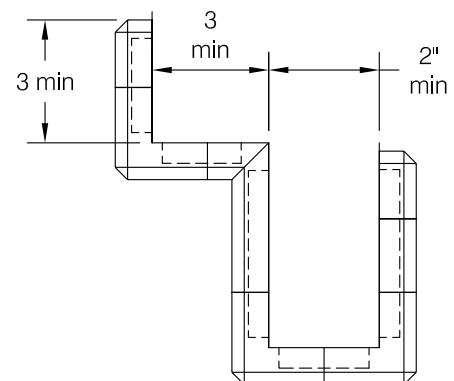
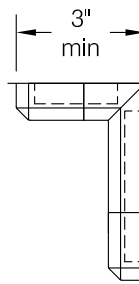
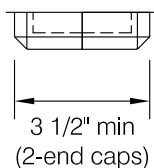


Inside Corner

	Aluminum Retainer	Rubber Bumper
End Cap	L - 1/2"	L - 1 3/4"
Outside Corner	L - 3/16"	L - 1 1/4"
Inside Corner	L - 1/2"	L - 0" (mitered)

Important: install aluminum retainer and molded accessories before cutting the rubber bumper.

Minimum Layout Configurations



Protector Series 2220

